

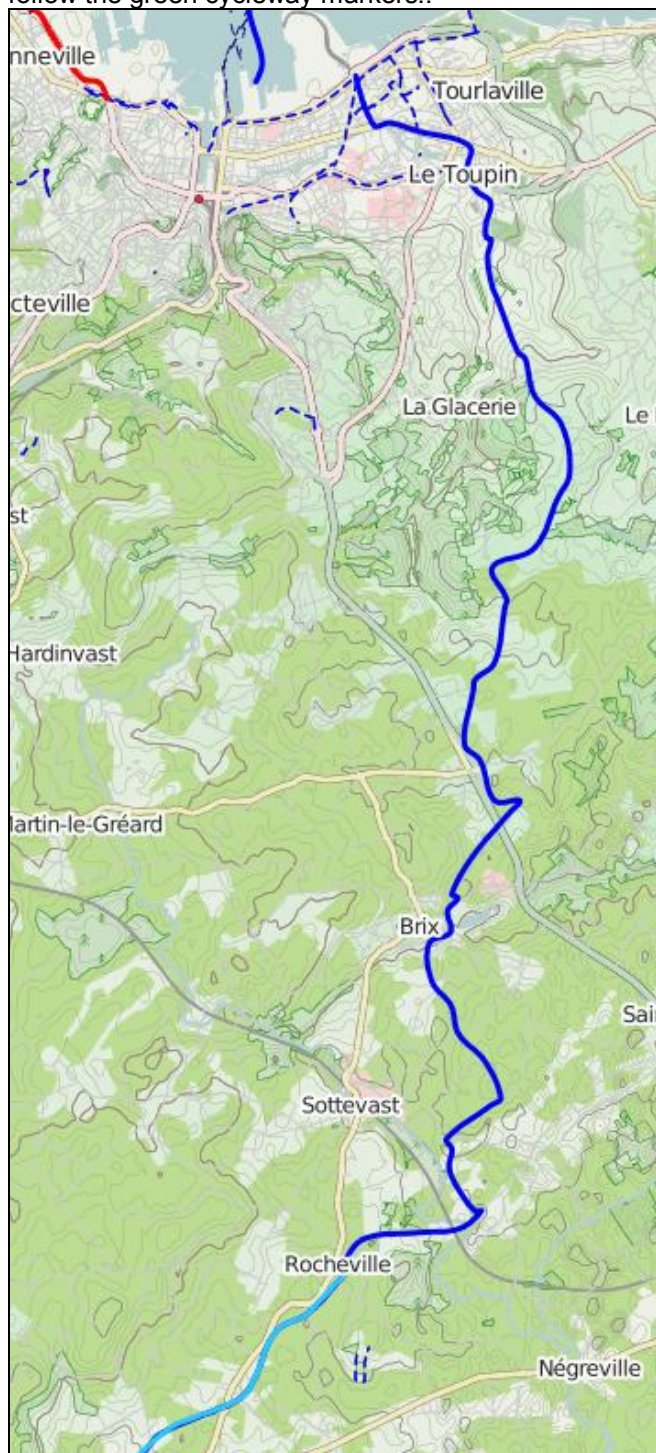
The maps used in this document are extracted from the cycle-routes maps layer on the open-source mapping site **Openstreetmap.org**. Where appropriate they have been updated 2015 using the latest information available on French regional and cycling websites.

Colour Key : Dark blue or orange = minor roads, shared with minimal traffic

Bright blue: Marked and often dedicated cycleway or "voie verte" Red : dedicated cycleway

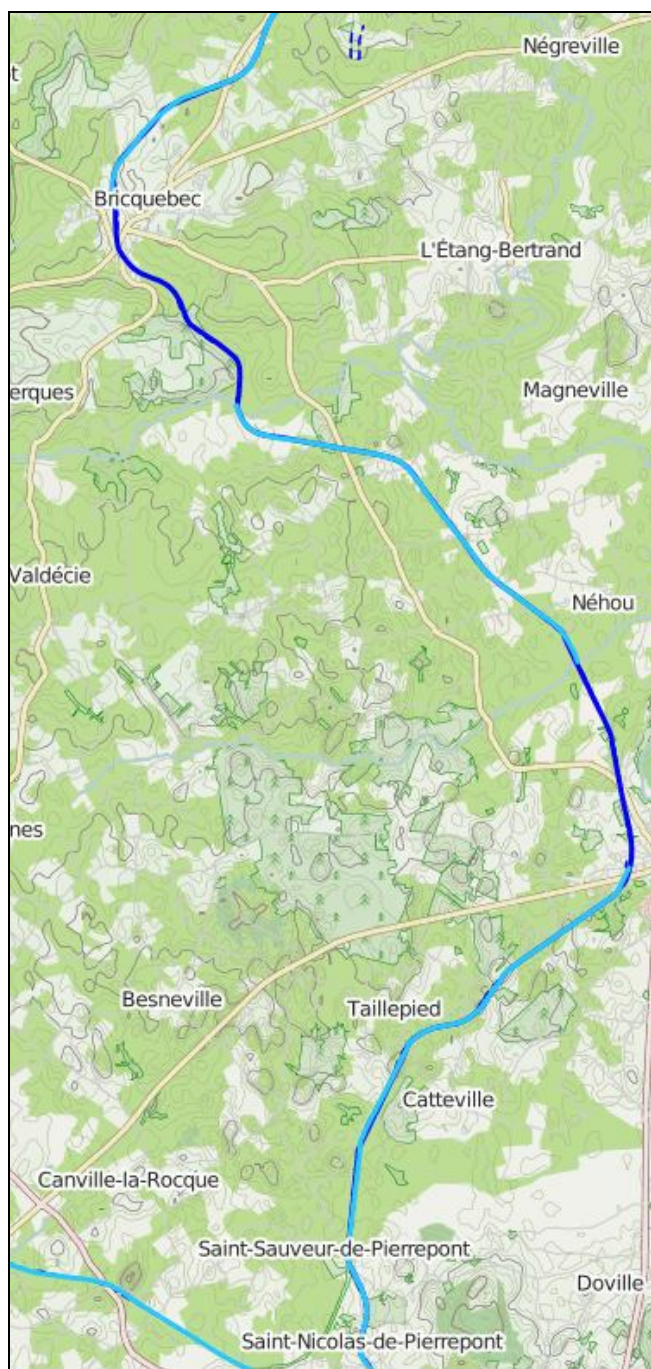
1a. Cherbourg to near Briquebec

The first few kilometres out of Cherbourg use small roads. From the dockside, take rue Aristide Briand, rue Gambetta then D63 rue des Alliés, and follow signs for **Chateau des Ravalet**. After the chateau, you are now on a marked cycle route; from now on just follow the green cycleway markers..



1b. Briquebec to Saint Nicolas de Pierrepont

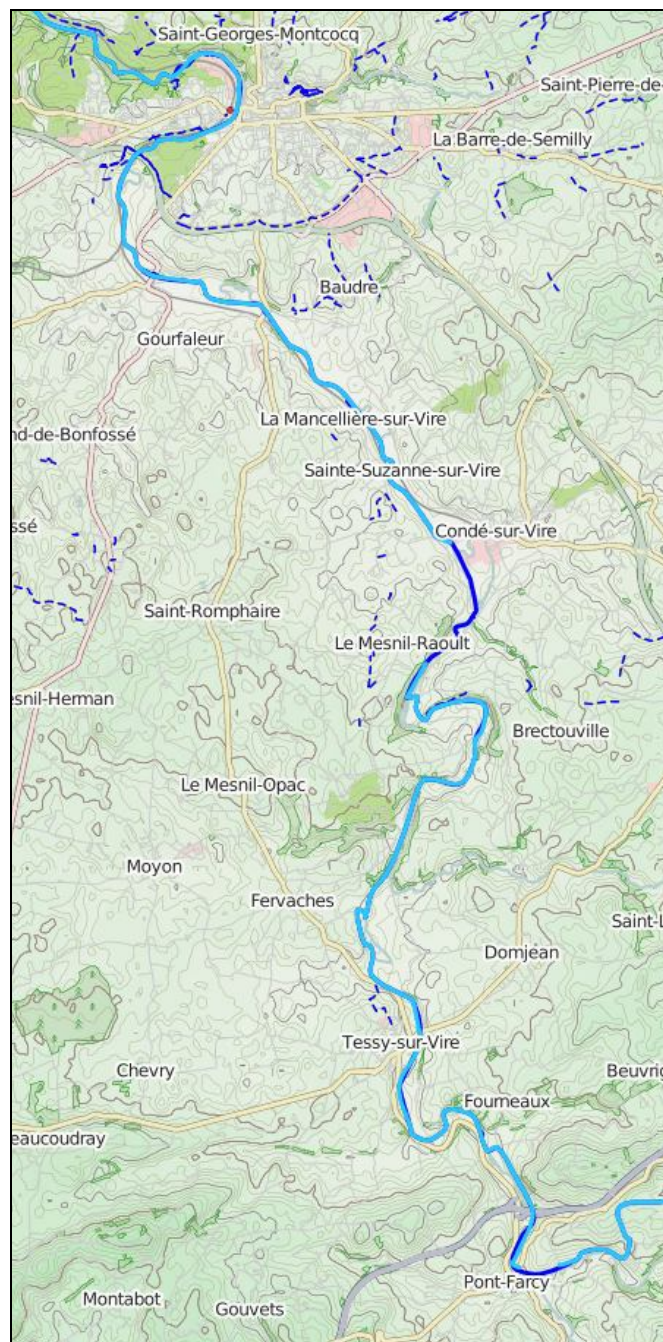
Dedicated cycleway, on an old railway line, past St Nicolas de Pierrepont, as far as La Haye du puits, about 90 km from Cherbourg.



At Bolleville you join a west-east cycleway on another old railway line, which you will follow as far as St Pellerin, just after **Carentan**.
(next page)



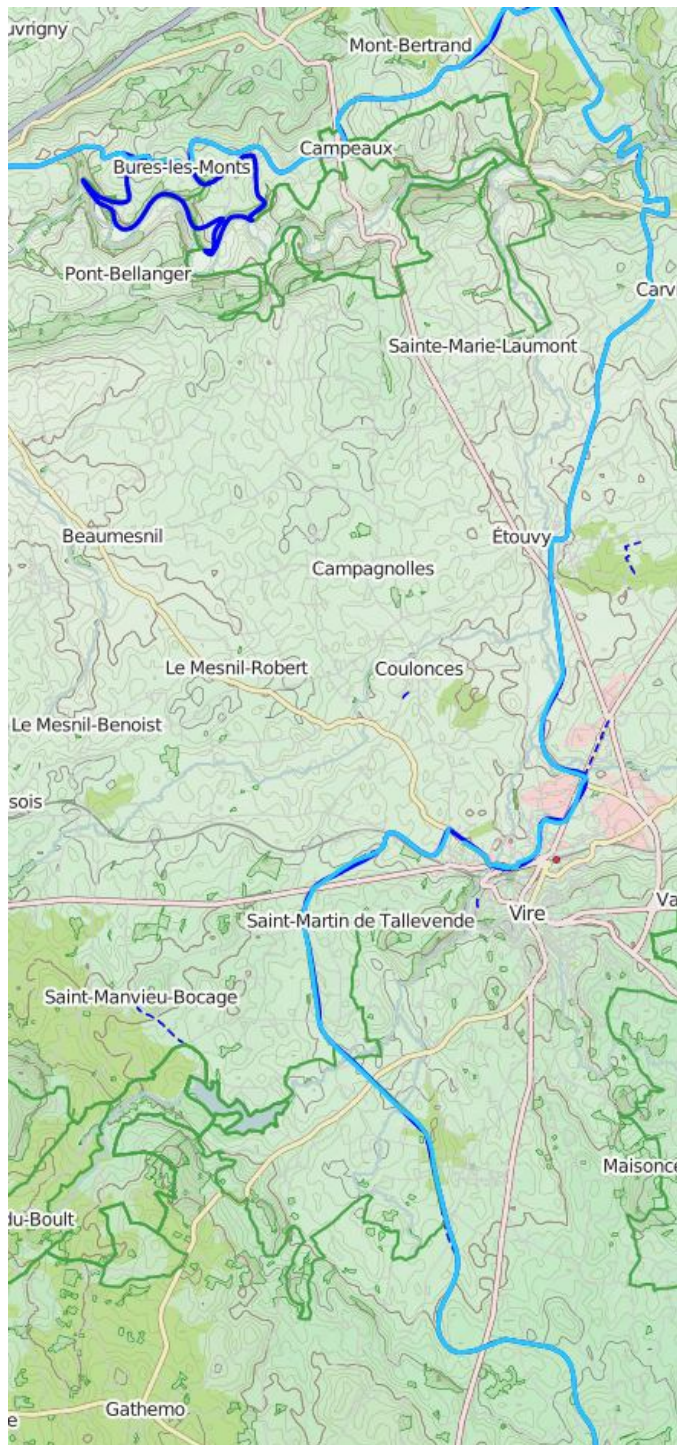
From St. Nicolas de Pierrepont / La Haye du Puits to Carentan, you remain on an old railway track. Between **Carentan** and **St Pellerin**, if you lose the cycleway, take the N179 southwards towards Montmartin en Graignes, then turn right onto the D89 which will take you straight down to the cycleway which you pick up at the hamlet of le Port des Planques. The cycleway here mostly uses small backroads as far as St Fromond, near Airel. Follow cycleway signs for **St Lo**. Dedicated voie verte cycleway follows the river Vire.



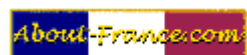
More cycling information on
About-France.com Cycling in France

Left turn in **Pont Farcy** onto the D675, then right on the D306 to Campeaux. Alternatively go straight from Pont Farcy via Beaumesnil to Vire on D 374 > D52, rejoining cycle route 3 km before Vire.

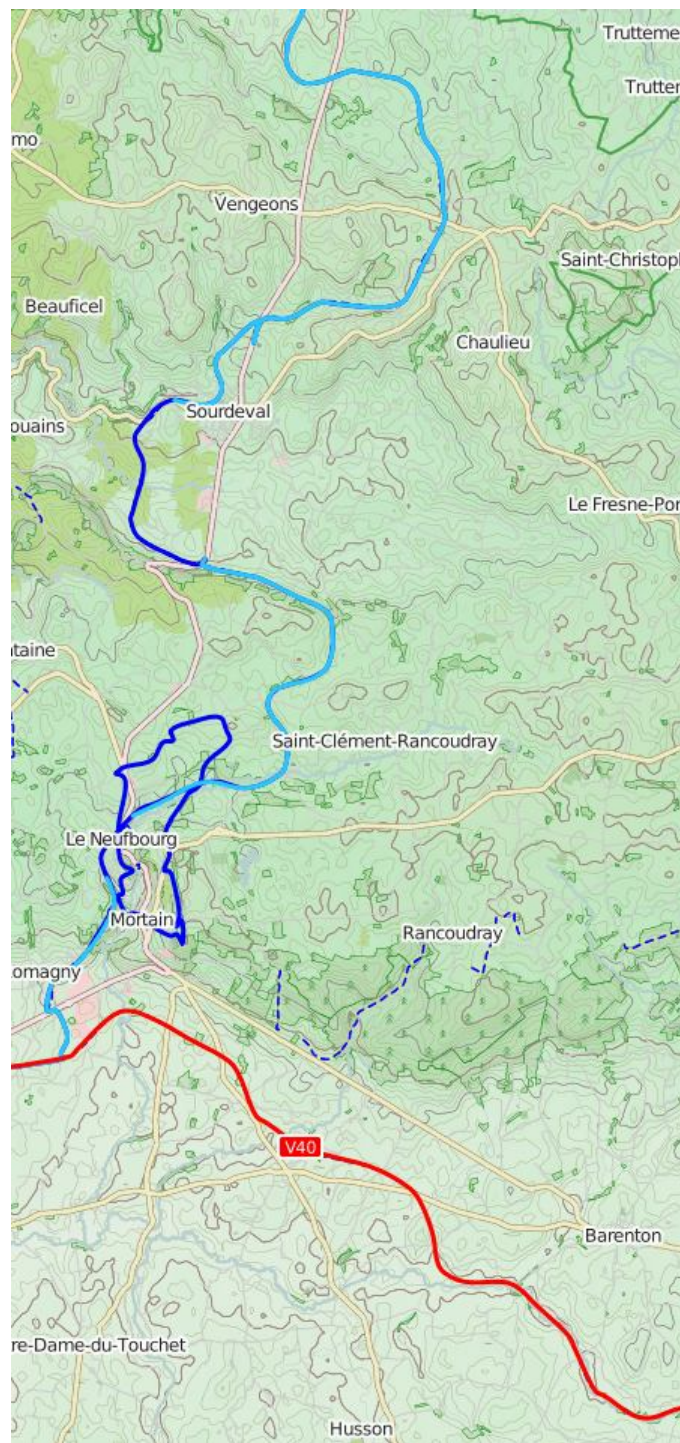
Pont Farcy - Campeaux - Vire - Mortain and on to the Paris to Mont Saint Michel veloroute V40



At **Vire**, you pick up the dedicated "Voie Verte" **Vire to Mortain** cycleway, following an old railway line.



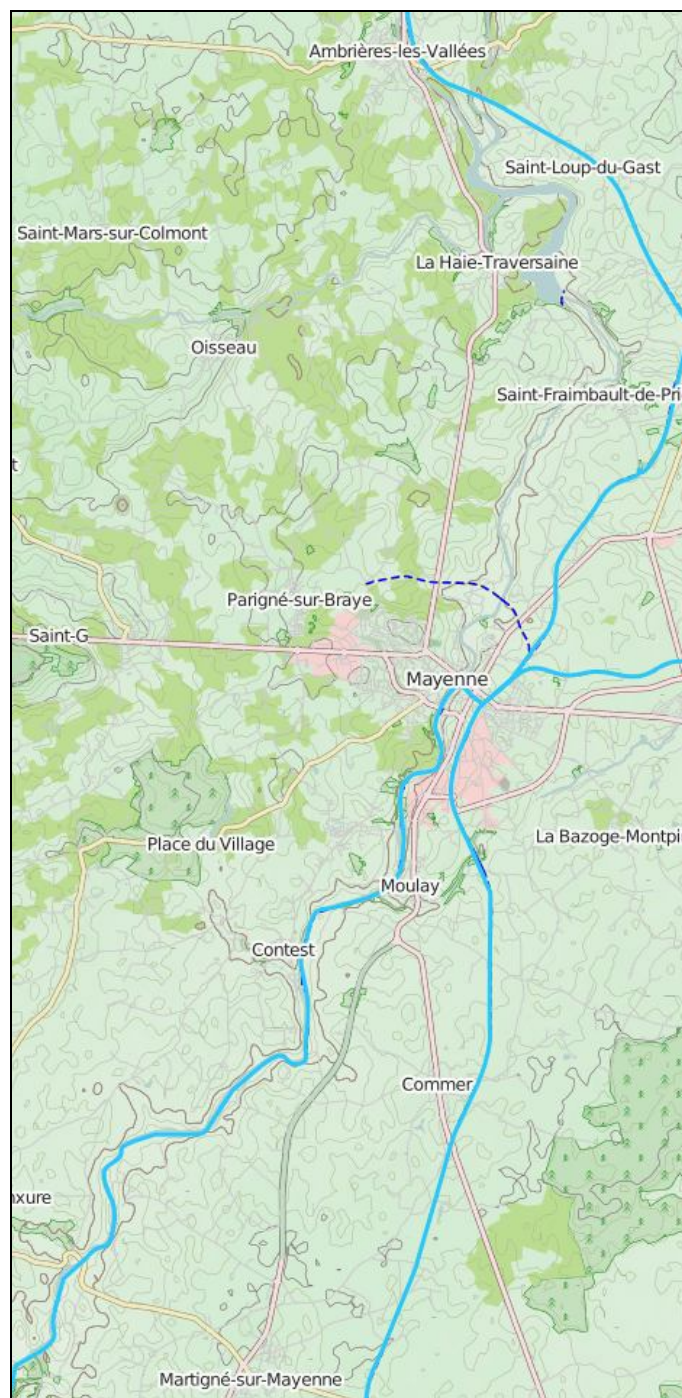
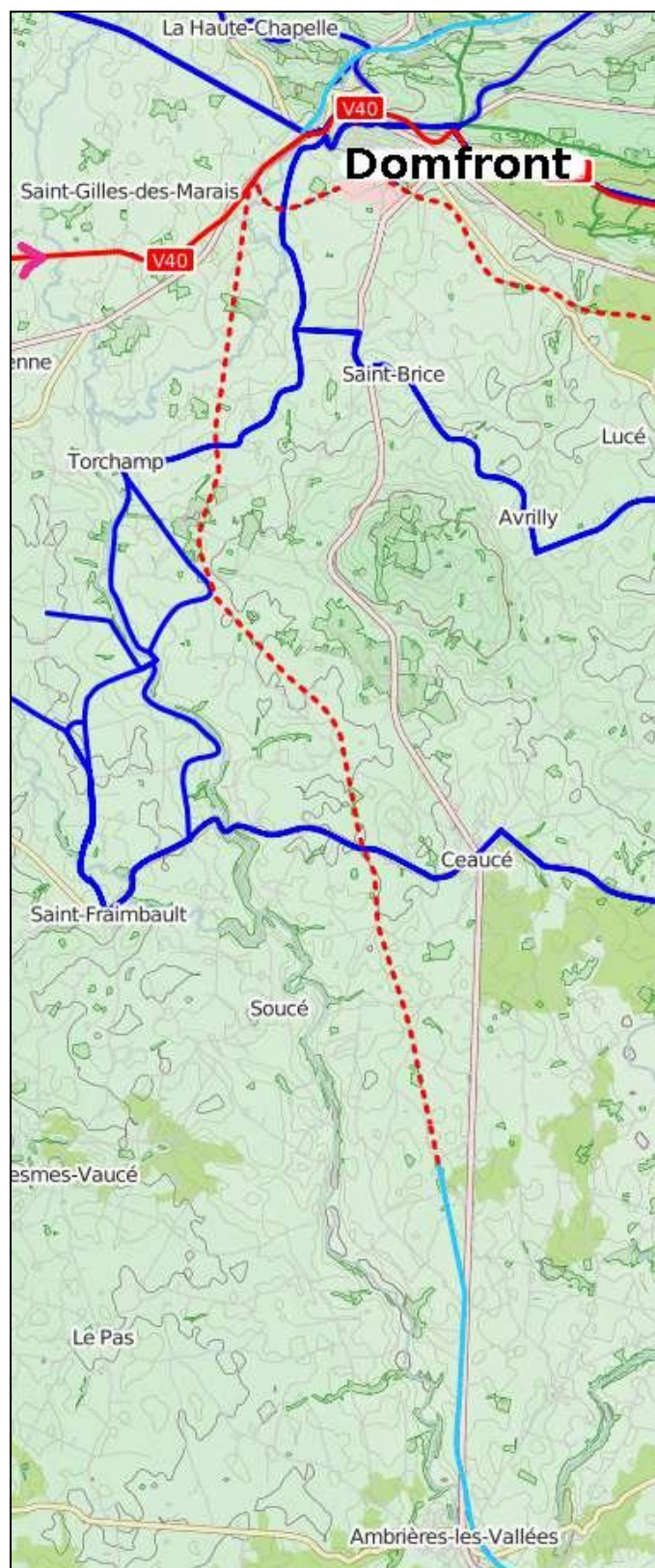
More cycling information on
About-France.com [Cycling in France](http://About-France.com)



After **Mortain**, join the Paris to Mont St Michel veloroute - marked in red as the V40 - on another old railway line - which you will follow east as far as Saint Gilles les Marais, just before Domfront.

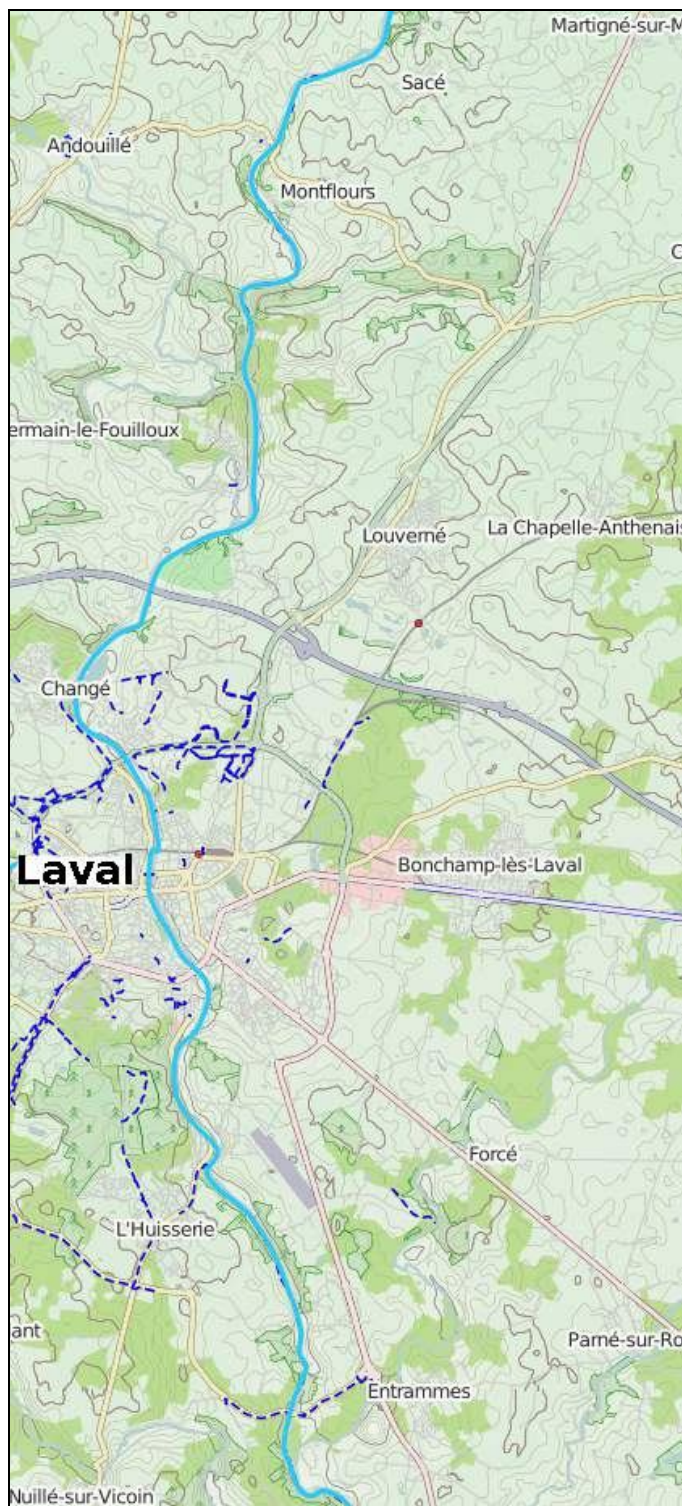
Page 4

There is not yet any dedicated cycle way from **Domfront** to Ambrières les Vallées, so it's a matter of choosing an appropriate byway. But from just north of Ambrières, you join the Mayenne valley cycleway, on another old railway track, as far as Mayenne. South from Mayenne, the cycleway follows the old towpath beside the river Mayenne, for over 50 miles.....

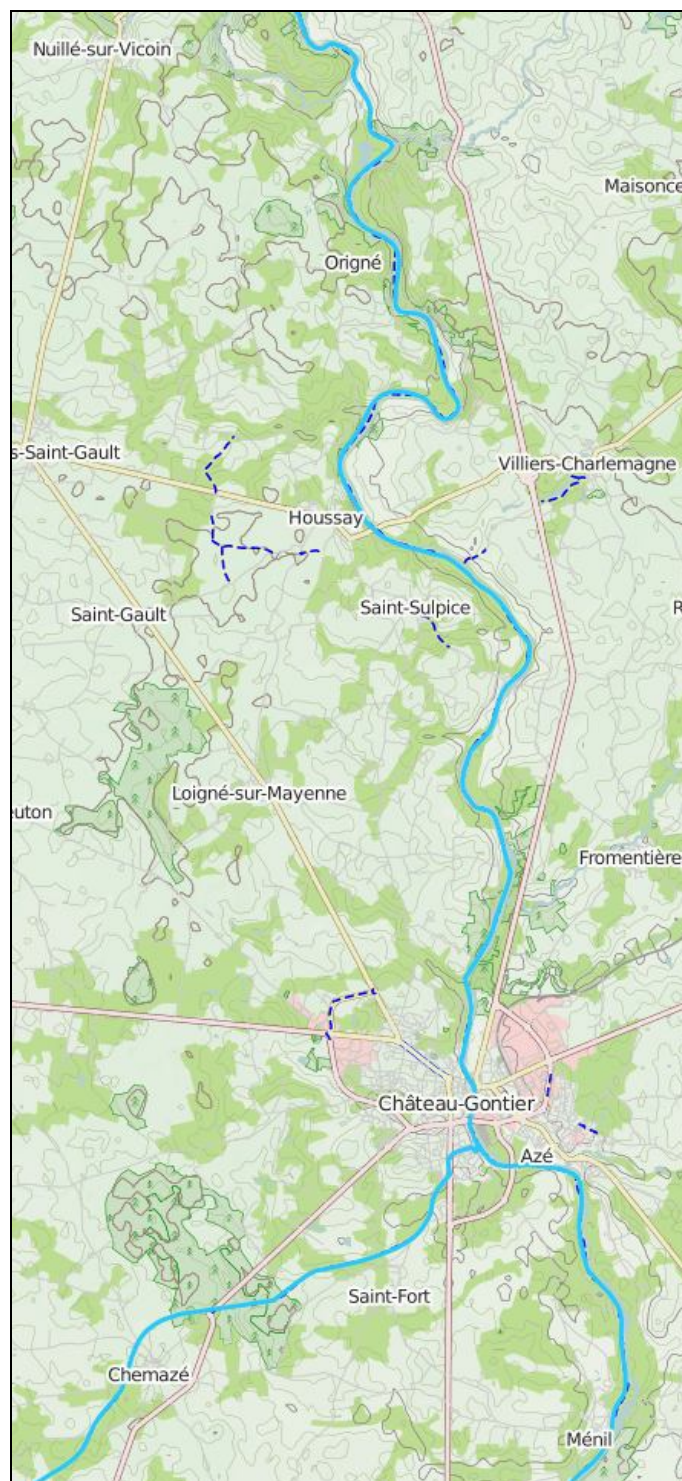


More cycling information on
About-France.com [Cycling in France](#)

.....



The route passes through the city of **Laval**.
Enter the city on the east side of the river, cross at the
railway bridge, then exit south on the west bank.



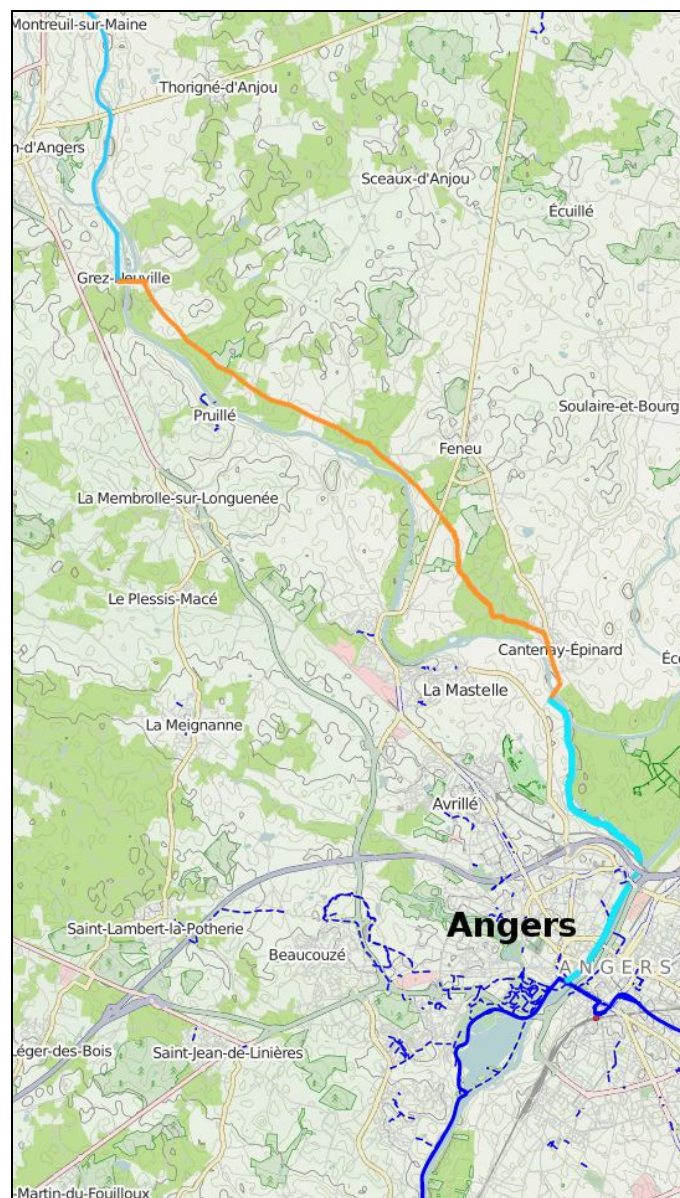
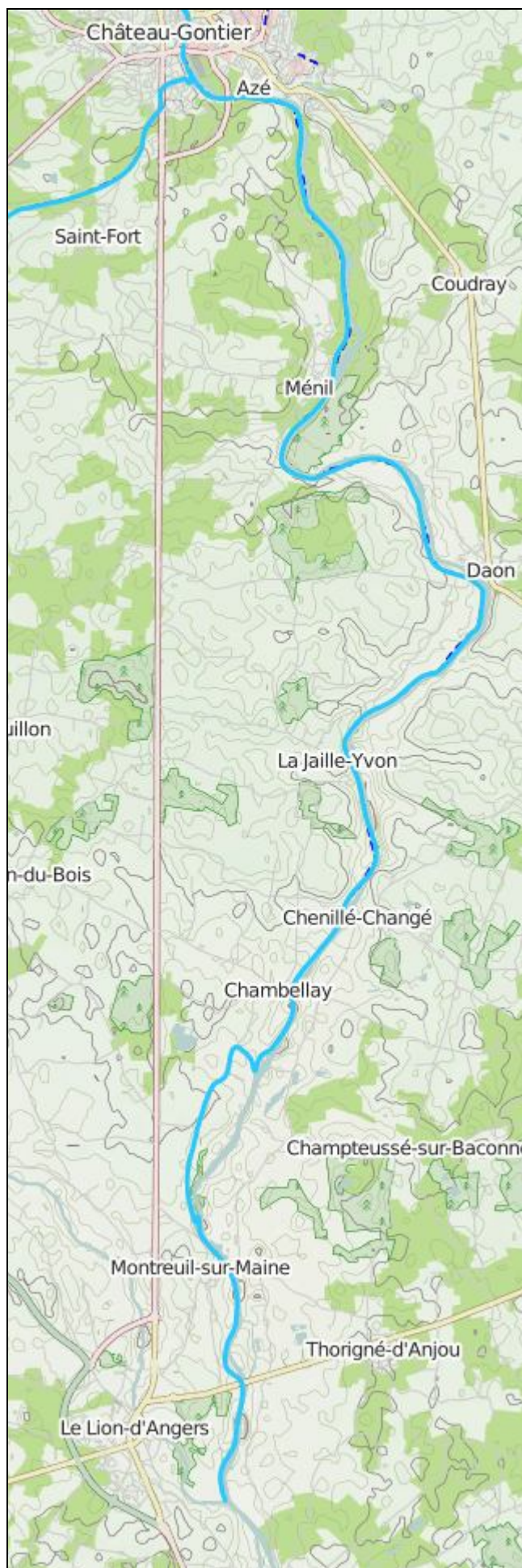
and on to **Chateau Gontier**.

South of Chateau Gontier, the route continues along the
banks of the Mayenne to within a few kilometres of Angers,
at Lion d'Angers....

....



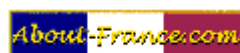
More cycling information on
About-France.com [Cycling in France](#)



Starting in spring 2015, there is now a marked route from **Lion d'Angers to the centre of Angers**. It mostly follows small lanes, but enters Angers on a dedicated route, where it links up with connecting cycleways (dark blue on the map above), to the **Loire Veloroute** part of Euro Veloroute 6.

Cyclists heading for La Rochelle, the southwest of France, and northern Spain can continue out of Angers either to the south or to the **southeast**, to join the Loire Veloroute, which is then followed southeast as far as **Saumur**,

See Part 2 for details of the
Cycle route [Angers - Saumur - Niort - La Rochelle](#) .



More cycling information on
[About-France.com Cycling in France](#)

In 2014, the cycle route finished at Lion d'Angers.